



**AM 2000**

**CAD Processing**

---





# Table Of Contents

<b>1 How CAD Files Are Originated.....</b>	<b>1</b>
<b>Routing the Emergency Call to CAD .....</b>	<b>1</b>
<b>Processing the CAD Files.....</b>	<b>1</b>
<b>2 Manual CAD Set-Up.....</b>	<b>4</b>
<b>Parameter File Maintenance Setup (MBPRC05) Program. ....</b>	<b>4</b>
<b>Trips (MBTRPM) Program .....</b>	<b>5</b>
Setting Up a CAD Trip In the CAD Information (MBCAD1) Program.....	6
CAD Information (MBCAD1) Program - Additional Information.....	7
CAD Information (MBCAD1) Program - Additional CAD Information - Option One .....	8
CAD Information (MBCAD1) Program - Responsible Party Option.....	9
CAD Information (MBCAD1) Program - CAD Notes Option.....	10
CAD Information (MBCAD1) Program - Billing Information Option.....	11
CAD Information (MBCAD1) Program - Trip Messages Option .....	12
CAD Information (MBCAD1) Program - Medicare Information Option....	13
CAD Information (MBCAD1) Program - Procedure/Diagnosis Option.....	14
CAD Information (MBCAD1) Program - Procedure Codes Option.....	15
CAD Information (MBCAD1) Program - Procedure Series Option.....	16
CAD Information (MBCAD1) Program - Accept Option .....	17
CAD Information (MBCAD1) Program - Default .....	18
CAD Information (MBCAD1) Program - Outstanding Trips.....	19
<b>3 CAD Set-Up .....</b>	<b>20</b>
<b>CAD Interface File Maintenance (MBCACDM) program .....</b>	<b>20</b>
<b>Adding A New Record to CAD .....</b>	<b>21</b>
CAD Interface File Maintenance (MBCACDM) Program - Add File Option	21
CAD Interface File Maintenance (MBCACDM) Program - Field To Field Mapping Option .....	22
CAD Interface File Maintenance (MBCACDM) Program - Trip Prefix Mapping Option .....	23
CAD Interface File Maintenance (MBCACDM) Program - Special LOB Mapping Option .....	24
CAD Interface File Maintenance (MBCACDM) Program - Special Division Mapping Option .....	25

CAD Interface File Maintenance (MBCACDM) Program - Auto Cancel, Clear Round Trip Option.....	26
Line of Business Maintenance (MBLOBM) Program .....	27
<b>4 Advanced CAD Setup .....</b>	<b>28</b>
<b>Setting Up the CAD Cross Reference (MBCADI1) Program .....</b>	<b>28</b>
<b>CAD Cross Reference (MBCADXM) program.....</b>	<b>29</b>
CAD Cross Reference (MBCADXM) Program.....	30
<b>5 Processing CAD Files.....</b>	<b>31</b>
<b>Transfer CAD To AM 2000 (MBCADI2) Program .....</b>	<b>31</b>
Transfer CAD To AM 2000 (MBCADI2) program .....	32
Transfer CAD To AM 2000 (MBCADI2) Program.....	33
Transfer CAD To AM 2000 (MBCADI2) Program.....	34
CAD Transfer Report (MBCADI3) Program.....	37
CAD Transfer Report (MBCADI3) Program.....	38
<b>6 Review CAD Trips .....</b>	<b>41</b>
<b>Outstanding Trips (MBOUTB) Program .....</b>	<b>41</b>
<b>Process Outstanding Trips (MBOUTB1) Program .....</b>	<b>42</b>
Process Outstanding Trips (MBOUTB1) Program .....	43
Outstanding Trip Report (MBOUTB2) Program .....	44
Outstanding Trip Report.....	45
Dry Run Maintenance (MBOUTB3) Program.....	46
Trip Entry (MBTRPM) Program.....	48
Trip Entry (MBTRP41) Program .....	49
<b>7 CAD Trouble Shooting .....</b>	<b>50</b>
<b>Top CAD Issues For Help Desk .....</b>	<b>50</b>
Utilities (MBUTL2) Program.....	51
<b>Fix CAD (FIXCAD2) Program.....</b>	<b>52</b>

---

<b>Process Outstanding Trips (MBOUTB1) Program .....</b>	<b>53</b>
Process Outstanding Trips (FIXCAD2) Program - Date Range .....	54
CAD Error Listing report .....	55
Process Outstanding Trips Report screen.....	56
<b>8 Additional CAD Notes .....</b>	<b>67</b>

## Table Of Figures

Figure 1: Parameter File Maintenance (8.1.11) screen.....	4
Figure 2: Trips (1.1) screen.....	5
Figure 3: CAD Information (1.1.1) screen.....	6
Figure 4: Additional Information pop-up window.....	7
Figure 5: Additional Information screen - Option One .....	8
Figure 6: Responsible Party screen.....	9
Figure 7: CAD Notes screen .....	10
Figure 8: CAD Billing Information screen .....	11
Figure 9: Trip Messages screen .....	12
Figure 10: Medicare Information screen.....	13
Figure 11: Procedure/Diagnosis screen .....	14
Figure 12: Procedure Codes screen.....	15
Figure 13: Procedure Series screen.....	16
Figure 14: Accept CAD Information screen.....	17
Figure 15: CAD Information screen (Default).....	18
Figure 16: Outstanding Trips (1.1.1) screen .....	19
Figure 17: CAD Interface File Maintenance (8.32) screen.....	20
Figure 18: CAD File Maintenance - Input File Type .....	21
Figure 19: CAD File Maintenance - Field to Field Mapping Options screen .....	22
Figure 20: Trip Prefix Mapping screen.....	23
Figure 21: Special LOB Mapping screen.....	24
Figure 22: Special Division Mapping .....	25
Figure 23: CAD Interface File Maintenance - Auto Cancel, Clear Round Trip screen....	26

---

Figure 24: Line Of Business Maintenance (2.15) screen.....	27
Figure 25: CAD Cross Reference (9.2.1) screen .....	28
Figure 26: CAD Cross Reference screen .....	29
Figure 27: CAD Cross Reference screen .....	30
Figure 28: Transfer CAD To AM 2000 (9.2.2) screen .....	31
Figure 29: Transfer CAD To AM 2000 (File Name) screen .....	32
Figure 30: Transfer CAD To AM 2000 screen.....	33
Figure 31: Transfer CAD To AM 2000 screen.....	34
Figure 32: CAD Transfer Error Log Report .....	36
Figure 33: CAD Transfer Report screen.....	37
Figure 34: CAD Transfer Report screen.....	38
Figure 35: Transferred CAD Tickets List Report screen.....	39
Figure 36: Transferred CAD Tickets List Report screen.....	40
Figure 37: Outstanding Trips screen. (1.31).....	41
Figure 38: Process Outstanding Trips (1.31.1) screen.....	42
Figure 39: Process Outstanding Trips Report screen.....	43
Figure 40: Outstanding Trip Report screen. (1.31.2).....	44
Figure 41: Outstanding Trip report .....	45
Figure 42: Dry Run Maintenance screen. (1.31.3).....	46
Figure 43: Dry Run Maintenance screen .....	47
Figure 44: Trip Entry screen .....	48
Figure 45: Trip Entry screen .....	49
Figure 46: Utilities (5.9) screen .....	51
Figure 47: Fix CAD screen.....	52
Figure 48: Process Outstanding Trips screen.....	53

---

Figure 49: Process Outstanding Trips (Date Range Selection) screen .....	54
Figure 50: CAD Error Listing Report.....	55
Figure 51: Process Outstanding Trips Report screen.....	56
Figure 52: Sample CAD File .....	65
Figure 53: CAD File View - Excel .....	66



# 1 How CAD Files Are Originated

## Routing the Emergency Call to CAD

When a call is received by a 911 operator, also known as the Public Service Answering Point or P.S.A.P (PSAP), the 911 operator at the PSAP routes the call to the appropriate agency; such as the police, sheriff, or fire and rescue service. This agency is considered the Primary PSAP. The operator at the Primary PSAP enters the information from the person making the 911 call into their system. In addition, the original 911 operator from the PSAP enters the caller's information, and a second 911 operator reads the information from the system PC as it is entered into their system and calls any appropriate secondary agencies, i.e. American Medical Response (AMR). This agency is considered the Secondary PSAP. If necessary, the Primary PSAP may call the secondary agency with additional updated or corrected information.

The Secondary PSAP never talks directly to the 911 caller and does not receive direct information from either the PSAP's system or the Primary PSAP's system. Since this emergency information is second hand, it is important that the PSAP operator communicates all necessary emergency information accurately and completely. The Secondary PSAP's operator enters the information into their (AMR) system as it is received and dispatches a unit to respond. AMR uses a Computer Aided Dispatch system known as C.A.D. (CAD) to process the information from the 911 call. The responding unit's personnel will communicate back to their operator any additional or corrected information needing to be updated.

## Processing the CAD Files

Every AMR Financial Entity (F/E) runs an automated CAD script at the end of each day. This script generates CAD files containing information from 911 calls made the previous day, and automatically transfers the CAD files to a selected directory using a File Transfer Protocol (FTP) program. The files are transferred to the */u/ftp/public* directory on the appropriate CSC system box designated for a particular F/E.



**Note**

Every AMR F/E is made up of several regional locations. These regions make up the Secondary PSAPs. Every Secondary PSAP has its own personnel, units, and CAD system. This is why there are multiple CAD Files for a single F/E.

---

When the AMR F/E initiates its CAD script, the CAD files are transferred from the regional offices to the */u/ftp/public* directory on the appropriate box for that F/E. When the site runs the Transfer CAD To AM 2000 (MBCADI2) program from the 9.2.2 screen, the following sequence of events occurs:

1. All CAD files that are stored in the */u/ftp/public* directory are moved to the */u/acudir/dataCAD* directory.
2. A copy of the CAD files are transferred to the */tmp/tmpCAD* directory. All file transfers are routed to this directory with the exception of the B-Box. CAD files transferred to the B box are transferred to the */u/tmp/tmpCAD* directory instead of the */tmp/tmpCAD* directory.
3. If a CAD file is transferred without errors, it is removed from the */u/acudir/dataCAD* directory.
4. If errors occur during the transfer, the file remains in the */u/acudir/dataCAD* directory until the errors are corrected and the file transfers successfully.
5. Every night at eleven o'clock, a CSC script is executed on AM 2000. This script checks the date in which the CAD files stored on the */tmp/tmpCAD* were modified. Any file with a modified date older than seven days is removed from the directory.



When received in a hard copy format from dispatch, CAD data can be manually entered into our system box by the site personnel.

---



## 2 Manual CAD Set-Up

### Parameter File Maintenance Setup (MBPRC05) Program.

```

==pty/ttyb6====TMB===== PARAMETER FILE MAINTENANCE =====MBPRC05==

===== DAILY PROCESSING OPTIONS =====
TRIP JRNL PRT SEQ (A'cct,N'ame,U'nit,T'rip,E'ntry): T
C/R JOURNAL PRT SEQ ('A'cct#,'P'atient,'E'ntry): A
DEFAULT PLACE OF SERVICE CODE OR ? : 41 AMBULANCE
IF TRIP BILL-TO RSP, AUTO INS FORM GENERATE (Y/N) : N
CASH RECEIPTS AUTO CHANGE BILL-TO PROMPT (Y/N) : Y
CASH RECEIPTS AUTO INS FILING PROMPT (Y/N) : Y
NUMBER OF DAYS FOR VALID TRIP DATE OF SERVICE RANGE: 060
USE ZONE (Y/N) : N
CALCULATE DISALLOWANCE AT TRIP ENTRY (Y/N) : N
CALCULATE EXPECTED COPAY AT TRIP ENTRY (Y/N) : N
DEFAULT TRIP ENTRY SCREEN ('M'enu,'C'ad,'T'rip) : M
PROCEED TO TRIP ENTRY FROM CAD ENTRY (Y/N) : Y
DIVISION DEFAULT (0/1/2/3/4): 3
LINE OF BUSINESS DEFAULT (0/1/2/3/4): 3
MANDATORY INSURANCE INFORMATION (Y/N) : Y
USE ODOMETER READINGS (Y/N) : N
DEFAULT TRANSACTIONS :

[F1]=End, [F2]=Add'l Info, [F4]=PrtScr, [F5]=Help, [F6]=Search, [F10]=Accept

```

Figure 1: Parameter File Maintenance (8.1.11) screen

If the Default Trip Entry Screen flag is set to *M* for menu, you can access CAD Information or Trip Entry from 1.1. If the flag is set to *C* for CAD, the CAD Information screen displays automatically after you input data on the 1.1 screen. If the flag is set to a *T* the program takes you to the Trip Entry screen when input data on the 1.1 screen. When *Y* is entered at the Proceed To Trip Entry From CAD entry prompt, the system automatically accesses the Trip Entry screen after a Cad trip is accepted.



The CAD setup on this screen is a one-time process. The data you enter will affect how CAD trips are processed throughout the system.

## Trips (MBTRPM) Program

```
==pty/ttyb6====TMB===== TRIPS =====MBTRPM==  
  
=====
```

1. CAD INFORMATION

2. TRIP ENTRY

SELECT OPTION: \_

[F1]=End, [F4]=PrtScr, [F5]=Help

Figure 2: Trips (1.1) screen

This screen only displays when you select the Default Trip Entry Screen *M* option in the Parameter file.

## Setting Up a CAD Trip In the CAD Information (MBCAD1) Program.

```

=ptypty/ttyw==TMB===== CAD INFORMATION =====MBCAD1==
ADD MODE

                PROCEED TO ADDITIONAL CAD SCREEN (Y/N): Y
=====
TRIP#: TRI-00004897-00   PAT: RITA                               DOS: 02/04/2000
ACCT#: 000000000                SSN:                        RP INFO:
PAT# : 0000                DOB: 00/00/0000   NOTES :
-----
UNIT      : 0001   UNIT ONE                RTRIP# :
CALLER    : PAT   PATIENT                 REF ID# :
CLLR NAME:                                # PATS  : 01
CANCEL    :                                PAT COND:
MEDICARE# :                                PRIORITY: /
FR LOC    :                                ----- T I M E -----
DESC1:    CALL RECVD: 14:00
DESC2:    DISPATCHED: 14:00
DESC3:    RESPONDED : 14:00
CITY :    STATE:   ZIP:   COUNTY:        ARRV SCENE: 14:00
LEFT SCENE: 00:00
TO LOC    :                                ARRV DEST : 00:00
DESC1:    COMPLETED : 00:00
CITY :    STATE:   ZIP:                   AVAILABLE : 00:00

[F1]=End,[F2]=Delete,[F3]=Add'lInfo,[F4]=Prt,[F5]=Help,[F6]=Srch,[F10]=Accept

```

Figure 3: CAD Information (1.1.1) screen

When you enter relevant data on this screen, you are prompted to enter additional CAD data. If you select the *N* option, you are prompted to accept the CAD trip. If you select the *Y* option, you have the ability to enter information on the next screens before accepting the CAD trip.

## CAD Information (MBCAD1) Program - Additional Information.

```

=ptypty/ttyw==TMB===== CAD INFORMATION =====MBCAD1==
ADD MODE

=====
TRIP#: TRI-00004897-00    PAT: RITA                                DOS: 02/08/2000
ACCT#: 000000000          SSN:                                RP INFO:
PAT# : 0000              DOB: 00/00/0000    NOTES :
-----+-----+-----+
UNIT      : 0001          |          ADDITIONAL INFORMATION          |
CALLER    : PAT          |-----+-----+-----+
CLLR NAME:              |                                          | 1
CANCEL   :              |          1.  ADDITIONAL CAD              |
MEDICARE#:              |          2.  RESPONSIBLE PARTY           | /
FR LOC   :              |          3.  CAD NOTES                   | I M E -----
DESC1    :              |          4.  BILLING INFORMATION         | 14:00
DESC2    :              |          5.  TRIP MESSAGES               | 14:00
DESC3    :              |          6.  MEDICARE INFORMATION        | 14:00
CITY     : STA          |          7.  PROCEDURE/DIAGNOSIS        | 14:00
                                                |                                          | 00:00
TO LOC   :              |          SELECT OPTION: _                | 00:00
DESC1    :              |                                          | 00:00
CITY     : STA          | [F1]=End, [F4]=PrtScr                   | 00:00
-----+-----+-----+
[F1]=End,[F2]=Delet                                     ch,[F10]=Accept

```

Figure 4: Additional Information pop-up window

## CAD Information (MBCAD1) Program - Additional CAD Information - Option One

```

=ptypty/ttyw==TMB===== CAD INFORMATION =====MBCAD1==
ADD MODE

=====
TRIP#: TRI-00004897-00   PAT: RITA                               DOS: 02/08/2000
ACCT#: 000000000        SSN:                                RP INFO:
PAT# : 0000            DOB: 00/00/0000   NOTES :
-----
                        ADDITIONAL CAD INFORMATION
=====
DISPATCHR:                AREA      :
ATTENDANT:                 GRID      :
DRIVER   :                 MAP PAGE  :
DIAG 1   : 780             GENERAL SYMPTOMS*   VEH ID#  :
ZONE     :                 CANC TIME: 00:00

PHY NAME :                ----- MILEAGE -----
AUTH NO. :                STARTING  :          .0
CASE NO. :                ENDING   :          10.0
CALL BACK:                TOTAL    :          10.0

[F1]=End,[F2]=Del,[F4]=Prt,[F5]=Help,[F6]=Srch,[F10]=Accept  ACCEPT (Y/N): Y

```

Figure 5: Additional Information screen - Option One

If you select Option 1, from the Additional CAD information screen, you have the ability to enter more detailed information; such as the personnel, zone, or mileage.



## CAD Information (MBCAD1) Program - Responsible Party Option

```

=ptypty/ttyw==TMB===== CAD INFORMATION =====MBCAD1==
ADD MODE

=====
TRIP#: TRI-00004897-00    PAT: RITA                                DOS: 02/08/2000
ACCT#: 000000000          SSN:                                RP INFO:
PAT# : 0000              DOB: 00/00/0000    NOTES :
-----
                                RESPONSIBLE PARTY INFORMATION
=====
RESPONSIBLE NAME   :
                    ADDRESS:
                    CITY    :
                    STATE   :
                    ZIP      :
                    PHONE    :

INSURANCE NAME     :
POLICY NO.         :
RELATION TO PATIENT:

[F1]=End,[F2]=Del,[F4]=Prt,[F5]=Help,[F6]=Srch,[F10]=Accept  ACCEPT (Y/N): Y

```

Figure 6: Responsible Party screen

If you select option 2, you have the ability to enter the Responsible Party's information.



## CAD Information (MBCAD1) Program - Billing Information Option

```

=ptypty/ttyw==TMB===== CAD INFORMATION =====MBCAD1==
ADD MODE

=====
TRIP#: TRI-00004897-00    PAT: RITA                                DOS: 02/08/2000
ACCT#: 000000000         SSN:                                RP INFO:
PAT# : 0000              DOB: 00/00/0000    NOTES :
-----
                                BILLING INFORMATION
=====
DIVISION          :
LINE OF BUSINESS :
TYPE OF BUSINESS :

MODIFIER 1       : G      HOSP DIALYSIS FAC
SPECIAL PROCEDURE:

EMERGENCY (Y/N)  :
TRIP STATUS      :

[F1]=End,[F2]=Del,[F4]=Prt,[F5]=Help,[F6]=Srch,[F10]=Accept  ACCEPT (Y/N): Y

```

Figure 8: CAD Billing Information screen

If you select option 4, you have the ability to enter billing information; such as the Division, Line-of-Business, or Type-of-Business.

## CAD Information (MBCAD1) Program - Trip Messages Option

```

=ptypty/ttyw==TMB===== CAD INFORMATION =====MBCAD1==
ADD MODE

=====
TRIP#: TRI-00004897-00    PAT: RITA                      DOS: 02/08/2000
ACCT#: 000000000          SSN:                          RP INFO:
PAT# : 0000              DOB: 00/00/0000    NOTES :
-----
                                TRIP MESSAGES
=====
                                PRINT FLAGS
                                INV  CONT  INS
MSG 1:                          N     N     N
MSG 2:                          N     N     N
MSG 3:                          N     N     N
MSG 4:                          N     N     N
MSG 5:                          N     N     N
MSG 6:                          N     N     N

[F1]=End,[F2]=Del,[F4]=Prt,[F5]=Help,[F10]=Accept          ACCEPT (Y/N): Y

```

Figure 9: Trip Messages screen

If you select option 5, you have the ability to enter trip messages.

## CAD Information (MBCAD1) Program - Medicare Information Option

```

=ptypty/ttyw==TMB===== CAD INFORMATION =====MBCAD1==
-----
                                MEDICARE INFORMATION
=====
PATIENT CONDITION:                MISCELLANEOUS INFO:
  BED CONFINED BEFORE   :   (Y/N/ )  DISCHARGED FR 1ST FAC   :   (Y/N/ )
  BED CONFINED AFTER    :   (Y/N/ )  ADMITTED TO 2ND FAC    :   (Y/N/ )
  UNCONSCIOUS/IN SHOCK : N (Y/N)     SERVICE AVAIL AT 1ST FAC:   (Y/N/ )
  VISIBLE HEMORRHAGING : N (Y/N)     ACCIDENT      (Y/N/H/S/O): N
                                           WORK RELATED          : N (Y/N)
TRANSPORT INFO:                   BILL FOR REJECTION ONLY : N (Y/N)
  COULD ONLY BE MOVED                                     SIGNATURE ON FILE     : Y (Y/N)
    BY STRETCHER      : N (Y/N)     SIGNATURE ON FILE DATE : 00/00/0000
  PHYSICALLY RESTRAINED: N (Y/N)
  ADMITTED TO HOSPITAL : (Y/N/ )    -- WAIVER/PHYSICIAN CERTIFICATION STMT --
  MEDICALLY NECESSARY : Y (Y/N)     OBTAINED : (W/Y/N/ )
  DISCHARGE            : (Y/N/ )    DATE      : 00/00/0000
  OUTPATIENT VISIT     : (Y/N/ )    AUTH NAME:
  TRANSPORTED TO/FOR  : A (A/B/C/D) PHY ID# :
  TYPE OF TRANSPORT   : I (I/R/T/X)

[F1]=End,[F2]=Del,[F4]=Prt,[F5]=Help,[F10]=Accept          ACCEPT (Y/N): Y

```

Figure 10: Medicare Information screen

If you select option 6, you have the ability to view the Medicare Information screen.

## CAD Information (MBCAD1) Program - Procedure/Diagnosis Option

```

=ptypty/ttyw==TMB===== CAD INFORMATION =====MBCAD1==
ADD MODE

=====
TRIP#: TRI-00004897-00   PAT: RITA                               DOS: 02/08/2000
ACCT#: 000000000                SSN:                        RP INFO:
-----
                                PROCEDURE/DIAGNOSIS
=====
SPECIAL PROC:                MODIFIER 1: G   HOSP DIALYSIS FAC

PROC  DESCRIPTION          MOD1 MOD2  QTY   PROC  DESCRIPTION          MOD1 MOD2  QTY
6040  EMERGENCY             G          0001

DIAG  DESCRIPTION          DIAG  DESCRIPTION
780   GENERAL SYMPTOMS*

[F1]=End,[F2]=Del,[F4]=Prt,[F5]=Help,[F6]=Srch,[F10]=Accept

```

Figure 11: Procedure/Diagnosis screen

If you select option 7, you have the ability to enter modifiers, procedures, and diagnosis codes.



**Note**

The Modifier and Diagnosis Codes will default from information entered on the CAD Billing and Additional CAD Information screens. In addition, you may enter them on this screen.

## CAD Information (MBCAD1) Program - Procedure Codes Option

```

=ptypty/ttyw==TMB===== CAD INFORMATION =====MBCAD1==
ADD MODE

=====
TRIP#: TRI-00004897-00    PAT: RITA                      DOS: 02/08/2000
ACCT#: 000000000          SSN:                          RP INFO:
-----
                                PROCEDURE/DIAGNOSIS
=====
SPECIAL PROC:                                MODIFIER 1: G    HOSP DIALYSIS FAC

PROC  DESCRIPTION      MOD1 MOD2  QTY    PROC  DESCRIPTION      MOD1 MOD2  QTY
6040  EMERGENCY         G         0001
#ALL

DIAG  DESCRIPTION          DIAG  DESCRIPTION
780   GENERAL SYMPTOMS*

                                OK TO GENERATE PROCEDURE SERIES (Y/N): Y
[F1]=End,[F2]=Del,[F4]=Prt,[F5]=Help,[F6]=Srch,[F10]=Accept

```

Figure 12: Procedure Codes screen

Procedure codes can be entered manually or in a procedure series.

## CAD Information (MBCAD1) Program - Procedure Series Option

```

=ptypty/ttyw==TMB===== CAD INFORMATION =====MBCAD1==
ADD MODE

=====
TRIP#: TRI-00004897-00    PAT: RITA                      DOS: 02/08/2000
ACCT#: 000000000          SSN:                          RP INFO:
-----
                                PROCEDURE/DIAGNOSIS
=====
SPECIAL PROC:                MODIFIER 1: G    HOSP DIALYSIS FAC

PROC  DESCRIPTION          MOD1 MOD2  QTY    PROC  DESCRIPTION          MOD1 MOD2  QTY
6040  EMERGENCY             G         0001
1100  ALS BASE                G         0001
2100  ALS MILEAGE            G         0010
3001  OXYGEN                  G         0001
3050  PERSONAL CARE SU       G         0001
3051  INFECTION PRECAU      G         0001

DIAG  DESCRIPTION          DIAG  DESCRIPTION
780   GENERAL SYMPTOMS*

[F1]=End,[F2]=Del,[F4]=Prt,[F5]=Help,[F6]=Srch,[F10]=Accept  ACCEPT (Y/N): Y

```

Figure 13: Procedure Series screen

This screen displays the procedures populated after selecting a procedure series.



## CAD Information (MBCAD1) Program - Accept Option

```

=ptypty/ttyw==TMB===== CAD INFORMATION =====MBCAD1==
ADD MODE

                                ACCEPT (Y/N): Y

=====
TRIP#: TRI-00004897-00   PAT: RITA                               DOS: 02/04/2000
ACCT#: 000000000        SSN:                                   RP INFO: N
PAT# : 0000             DOB: 00/00/0000   NOTES : N
-----
UNIT      : 0001   UNIT ONE                                     RTRIP# :
CALLER    : PAT   PATIENT                                     REF ID# :
CLLR NAME:                                                # PATS  : 01
CANCEL    :                                                PAT COND:
MEDICARE# :                                                PRIORITY: /
FR LOC    :                                                ----- T I M E -----
DESC1:    CALL RECVD: 14:00
DESC2:    DISPATCHED: 14:00
DESC3:    RESPONDED : 14:00
CITY :    STATE:    ZIP:    COUNTY:    ARRV SCENE: 14:00
                                                LEFT SCENE: 00:00
TO LOC    :                                                ARRV DEST : 00:00
DESC1:    COMPLETED : 00:00
CITY :    STATE:    ZIP:    AVAILABLE : 00:00

[F1]=End,[F2]=Delete,[F3]=Add'lInfo,[F4]=Prt,[F5]=Help,[F6]=Srch,[F10]=Accept

```

Figure 14: Accept CAD Information screen

This screen allows you to accept the CAD information you entered on the previous CAD Information screens.



CAD trips are not officially considered part of AM 2000 until the trips are successfully entered through Trip Entry.

## CAD Information (MBCAD1) Program - Default

```

==ptypty/ttyw==TMB===== CAD INFORMATION =====MBCAD1==

=====
TRIP#:          PAT:          DOS:
ACCT#:          SSN:    - -    RP INFO:
PAT# :          DOB:          NOTES :
-----
UNIT   :          RTRIP#  :
CALLER :          REF ID# :
CLLR NAME:        # PATS  :
CANCEL  :          PAT COND:
MEDICARE#:        PRIORITY:    /
FR LOC  :          ----- T I M E -----
  DESC1:          CALL RECVD:
  DESC2:          DISPATCHED:
  DESC3:          RESPONDED :
  CITY :    STATE:  ZIP:    COUNTY:  ARRV SCENE:
  LEFT SCENE:
TO LOC  :          ARRV DEST :
  DESC1:          COMPLETED :
  CITY :    STATE:  ZIP:    AVAILABLE :

[F1]=End,[F2]=Delete,[F3]=Add'lInfo,[F4]=Prt,[F5]=Help,[F6]=Srch,[F10]=Accept

```

Figure 15: CAD Information screen (Default)

When you access the CAD information screen, the cursor defaults to the Trip Number field. If you select *F6* you may view the outstanding CAD trips.

## CAD Information (MBCAD1) Program - Outstanding Trips

```
==ptypty/ttyw==TMB===== CAD INFORMATION =====MBCAD1==
-----
                          Outstanding Trips

DATE OF SERVICE: 00/00/0000      UNIT:          CALLER:
-----
      D.O.S      TRIP NUMBER      PATIENT NAME              UNIT  CALLER
-----
[ ] 02/04/2000 TRI-00004897-00 RITA                0001  PAT
[ ] 02/14/2000 TRI-00021499-00 PAM HORNSBY        0001  MONT

      ** Enter 'X' to select, 'D' to display trip detail information **

[F1]=End, [F4]=PrtScr, [F5]=Help, [F6]=Search, [F7]=First, [F8]=Next
```

Figure 16: Outstanding Trips (1.1.1) screen

From this screen, you may select a CAD trip for modification or review.

### 3 CAD Set-Up

#### CAD Interface File Maintenance (MBCACDM) program

```

==pty/ttywb====TMB===== CAD INTERFACE FILE MAINTENANCE =====MBCACDM==

=====
L.O.B. CAD ID      : ____
CAD INPUT FILE TYPE:
-----
FIELD TO FIELD MAPPING OPTIONS
CALLER            :
DIAGNOSIS         :
DIVISION          :
LINE OF BUSINESS:
LOCATION           :
PERSONNEL         :
REASON CODE       :
TYPE OF BUSINESS:
UNIT              :
ZONE              :

SPECIAL LOB MAPPING :

AUTO CANCEL      (Y/N):
CLEAR RND TRIP#(Y/N):
[F1]=End, [F2]=Delete, [F4]=PrtScr, [F5]=Help, [F6]=Search, [F10]=Accept

```

Figure 17: CAD Interface File Maintenance (8.32) screen

- L.O.B. CAD ID - This is the ID number used to identify particular CAD file extensions. This ID may also be used to determine the Trip Prefix.
- CAD INPUT FILE TYPE - This field is limited to only the available CAD File Layouts.
- MAPPING OPTIONS - Caller, Diagnosis, Division, Line-of-Business, Location, Personnel, Reason Guide, Type-of-Business, Unit, and Zone. Field default is B.
- SPECIAL LOB MAPPING OPTIONS - Available options change depending on the selected CAD Input File Type.
- AUTO CANCEL (Y/N) - Automatically cancels trips with a Cancel Code in the CAD file.
- CLEAR RND TRIP # (Y/N) - Automatically clears any round trips numbers.

## Adding A New Record to CAD

### CAD Interface File Maintenance (MBCACDM) Program - Add File Option

```

==pty/ttyia====TMB===== CAD INTERFACE FILE MAINTENANCE =====MBCACDM==
ADDING NEW RECORD

=====
L.O.B. CAD ID      : TRI
CAD INPUT FILE TYPE: ____

-----+-----+-----
FIELD TO FIELD MAPPING OP | CAD SYSTEMS |
CALLER                : | ----- |
DIAGNOSIS             : | COM - COM STAR |
DIVISION              : | CM2 - COM STAR (WEST) |
LINE OF BUSINESS:    : | EAI - EAI CAD DISPATCH |
LOCATION                : | HFD - VS3 FOR HARTFORD |
PERSONNEL             : | HOU - GEAC/EAI HOUSTON |
REASON CODE           : | TRI - TRITECH |
TYPE OF BUSINESS:    : | VS3 - VISICAD 3 |
UNIT                  : | |
ZONE                  : | [F1]=END      CODE : ____ |
-----+-----+-----

SPECIAL LOB MAPPING :

AUTO CANCEL      (Y/N):
CLEAR RND TRIP#(Y/N):
[F1]=End, [F2]=Delete, [F4]=PrtScr, [F5]=Help, [F6]=Search, [F10]=Accept

```

Figure 18: CAD File Maintenance - Input File Type

## CAD Interface File Maintenance (MBCACDM) Program - Field To Field Mapping Option

```

=pty/ttyia====TMB===== CAD INTERFACE FILE MAINTENANCE =====MBCACDM==
  ADDING NEW RECORD

=====
L.O.B. CAD ID      : TRI
CAD INPUT FILE TYPE: TRI  TRITECH CAD FILES
-----
FIELD TO FIELD MAPPING OPTIONS
  CALLER          : B          +-----+
  DIAGNOSIS       : B          |  VALID OPTIONS ARE:  |
  DIVISION        : B          |                       |
  LINE OF BUSINESS: B          |M=MAP ONLY TO CROSS REFERENCE FILE |
  LOCATION        : B          |A=MAP ONLY TO AM 2000 FILE |
  PERSONNEL       : B          |B=MAP TO BOTH(CROSS REFERENCE FILE FIRST |
  REASON CODE     : B          | THEN IF NOT FOUND MAP TO AM 2000 FILE |
  TYPE OF BUSINESS: B          |                       |
  UNIT           : B          +-----+
  ZONE            : B

TRIP PREFIX MAPPING : Default to LOB Cad ID
SPECIAL LOB MAPPING : Default to Entered LOB
SPECIAL DIV MAPPING : Direct populate from field #70
AUTO CANCEL (Y/N): N
CLEAR RND TRIP#(Y/N):
[F1]=End, [F2]=Delete, [F4]=PrtScr, [F5]=Help, [F6]=Search, [F10]=Accept

```

Figure 19: CAD File Maintenance - Field to Field Mapping Options screen

The Field to Field Mapping Options determine how the fields transferred from CAD are populated in AM 2000. The fields can be mapped from the Cross Reference File Only (9.2.1) screen by entering an **M**. If you enter an **A**, the system maps the path from the AM 2000 File Maintenance program. The usual entry is **B**, which maps from the Cross Reference File first. If the field is not found, it is then mapped from the AM 2000 File Maintenance program.

## CAD Interface File Maintenance (MBCACDM) Program - Trip Prefix Mapping Option

```

==pty/ttyia====TMB===== CAD INTERFACE FILE MAINTENANCE =====MBCACDM==
  ADDING NEW RECORD

=====
L.O.B. CAD ID      : TRI
CAD INPUT FILE TYPE: TRI  TRITECH CAD FILEZ
-----
FIELD TO FIELD MAPPING OPTIONS
  CALLER           : B
  DIAGNOSIS        : B
  DIVISION          : B
  LINE OF BUSINESS: B
  LOCATION          : B
  PERSONNEL         : B
  REASON CODE      : B
  TYPE OF BUSINESS: B
  UNIT              : B
  ZONE              : B
  TRIP PREFIX MAPPING : _ Default
  SPECIAL LOB MAPPING : Default
  SPECIAL DIV MAPPING : Direct
  AUTO CANCEL       (Y/N): N
  CLEAR RND TRIP#(Y/N):

-----+-----+
|                                     |
|                   VALID OPTIONS   |
| ' ' = Default to LOB Cad ID      |
| 'D' = Map from District Field    |
| 'U' = Map from Unit Field        |
| 'Z' = Map from Zone Field        |
|                                     |
|-----+-----+
[F1]=End, [F2]=Delete, [F4]=PrtScr, [F5]=Help, [F6]=Search, [F10]=Accept

```

Figure 20: Trip Prefix Mapping screen

If the Trip Prefix Mapping field is left blank, the default value is the appropriate LOB CAD ID entered. The *D* option maps from the District field in the CAD file. The *U* option maps from Unit, and the *Z* option maps from Zone. This is not an option for all CAD types.

## CAD Interface File Maintenance (MBCACDM) Program - Special LOB Mapping Option

```

==pty/ttyia====TMB===== CAD INTERFACE FILE MAINTENANCE =====MBCACDM==
  ADDING NEW RECORD

=====
L.O.B. CAD ID      : TRI
CAD INPUT FILE TYPE: TRI  TRITECH CAD FILES
-----
FIELD TO FIELD MAPPING OPTIONS
  CALLER          : B
  DIAGNOSIS       : B
  DIVISION        : B
  LINE OF BUSINESS: B
  LOCATION        : B
  PERSONNEL       : B
  REASON CODE     : B
  TYPE OF BUSINESS: B
  UNIT           : B
  ZONE           : B
  TRIP PREFIX MAPPING : Default
  SPECIAL LOB MAPPING : _ Default
  SPECIAL DIV MAPPING : D Direct
  AUTO CANCEL      (Y/N): N
  CLEAR RND TRIP#(Y/N):

  +-----+
  |          VALID OPTIONS          |
  | ' ' = Default to Entered LOB   |
  | 'N' = DO NOT populate LOB field |
  | 'D' = Map from District Field   |
  | 'U' = Map from Unit Field       |
  | 'V' = Map from Division Field   |
  | 'Z' = Map from Zone Field       |
  | 'A' = Map from Caller Field     |
  | 'C' = Map from County and Caller Fields |
  | 'I' = Map from City Field       |
  | 'O' = Map from County Field     |
  +-----+
[F1]=End, [F2]=Delete, [F4]=PrtScr, [F5]=Help, [F6]=Search, [F10]=Accept

```

Figure 21: Special LOB Mapping screen

The special LOB Mapping field defaults to the LOB you enter when you process the CAD file, or it maps from a CAD field depending on the option selected. Options will vary depending on the CAD type selected.



## CAD Interface File Maintenance (MBCACDM) Program - Special Division Mapping Option

```

==pty/ttycf====TMB===== CAD INTERFACE FILE MAINTENANCE =====MBCACDM==
  ADDING NEW RECORD

=====
L.O.B. CAD ID      : TRI
CAD INPUT FILE TYPE: TRI  TRITECH CAD FILES
-----
FIELD TO FIELD MAPPING OPTIONS
  CALLER           : B
  DIAGNOSIS        : B
  DIVISION          : B
  LINE OF BUSINESS: B
  LOCATION          : B
  PERSONNEL         : B
  REASON CODE      : B
  TYPE OF BUSINESS: B
  UNIT              : B
  ZONE              : B
  TRIP PREFIX MAPPING : Default
  SPECIAL LOB MAPPING : Default
  SPECIAL DIV MAPPING : Direct
  AUTO CANCEL       (Y/N): N
  CLEAR RND TRIP#(Y/N):

  +-----+
  |          VALID OPTIONS          |
  | 'D' = Direct populate from field #70 |
  | 'N' = DO NOT populate DIV field   |
  | 'U' = Map from Unit Field         |
  | 'Z' = Map from Zone Field         |
  +-----+

[F1]=End, [F2]=Delete, [F4]=PrtScr, [F5]=Help, [F6]=Search, [F10]=Accept

```

Figure 22: Special Division Mapping

The Division Mapping functions like the Trip Prefix Mapping function. And like the Trip Prefix Mapping, it is not available on all CAD types.

## CAD Interface File Maintenance (MBCACDM) Program - Auto Cancel, Clear Round Trip Option

```

==pty/ttycf====TMB===== CAD INTERFACE FILE MAINTENANCE =====MBCACDM==
  ADDING NEW RECORD

=====
L.O.B. CAD ID      : TRI
CAD INPUT FILE TYPE: TRI  TRITECH CAD FILES
-----
FIELD TO FIELD MAPPING OPTIONS
  CALLER           : B
  DIAGNOSIS        : B
  DIVISION         : B
  LINE OF BUSINESS: B
  LOCATION         : B
  PERSONNEL        : B
  REASON CODE      : B
  TYPE OF BUSINESS: B
  UNIT            : B
  ZONE            : B
TRIP PREFIX MAPPING :      Default to LOB Cad ID
SPECIAL LOB MAPPING :      Default to Entered LOB
SPECIAL DIV MAPPING : D   Direct populate from field #70
AUTO CANCEL      (Y/N): Y
CLEAR RND TRIP#(Y/N): N
[F1]=End, [F2]=Delete, [F4]=PrtScr, [F5]=Help, [F6]=Search, [F10]=Accept

```

Figure 23: CAD Interface File Maintenance - Auto Cancel, Clear Round Trip screen

When the Auto Cancel option is set to yes, the system automatically cancels a CAD trip that is transferred with a valid AM 2000 cancel code. The Clear Round Trip Number option determines whether the Round Trip field is loaded during the CAD transfer process.

## Line of Business Maintenance (MBLOBM) Program

```

=====ttywb=====TMB===== LINE OF BUSINESS MAINTENANCE =====MBLOBM=====
ADDING NEW RECORD

                                ACCEPT (Y/N) : Y

=====
LINE OF BUSINESS CODE: BHAM                                ---MODIFIED BY---
LINE OF BUSINESS DESC: BIRMINGHAM'S TEST LOB              USER:
LINE OF BUSINESS DBA :                                     DATE:
FIELD OFFICE NAME   :
CAD NUMBER          : TRI TRITECH CAD FILES
PROV ID DIFF FROM DIV: N (Y/N)
ALT PROV ID BY TOB : N (Y/N)
SPECIAL REMIT INFO : N (Y/N)
ADDITIONAL INFO    :
-----
Enter "*" for ALL.
TOB  DESCRIPTION          DIV  DESCRIPTION
*

```

[F1]=End, [F2]=Delete, [F4]=PrtScr, [F5]=Help, [F6]=Search, [F10]=Accept

Figure 24: Line Of Business Maintenance (2.15) screen

- **LINE-OF-BUSINESS CODE** – This is the LOB code used when transferring the CAD file.
- **CAD NUMBER** - This is the L.O.B. CAD ID previously entered on the Cad Interface Maintenance screen.



**Note**

When testing a CAD file, accept the field defaults on this screen. For the DIV and TOB fields enter \* for all.

## 4 Advanced CAD Setup

Occasionally AMR will cross reference CAD information to use other AM 2000 codes. For example, if the caller code on the CAD File is 911, AMR may want change it to EMER when it appears on the AM 2000 system. The site may setup multiple fields to cross reference each CAD file.

### Setting Up the CAD Cross Reference (MBCADI1) Program

```

+====/ttycf====TMB===== CAD CROSS REFERENCE =====MBCADI1=+
  *DIRECT ACCESS*
  [F1]=END          ENTER OPTION NUMBER: _____          [F5]=HELP
+=====+
  FIELD TO FIELD MAPPING  MAINT  LIST      SPECIAL MAPPING OPTIONS  MAINT  LIST
  CALLER..... [01] [51]    CALL CODE TO LOB..... [21] [71]
  DIAGNOSIS..... [02] [52]    CITY TO LOB..... [22] [72]
  DIVISION..... [03] [53]    COMPANY TO LOB..... [23] [73]
  LINE OF BUSINESS..... [04] [54]    COUNTY TO LOB..... [24] [74]
  LOCATION..... [05] [55]    COUNTY & CALLER TO LOB.. [25] [75]
  PERSONNEL..... [06] [56]    DISTRICT TO LOB..... [26] [76]
  REASON CODES..... [07] [57]    DISTRICT TO TRIP PREFIX. [27] [77]
  TYPE OF BUSINESS..... [08] [58]    DIVISION TO LOB..... [28] [78]
  UNIT/VEHICLE..... [09] [59]    UNIT TO DIVISION..... [29] [79]
  ZONE..... [10] [60]    UNIT TO LOB..... [30] [80]
                               UNIT TO TRIP PREFIX..... [31] [81]
                               ZONE TO DIVISION..... [32] [82]
                               ZONE TO LOB..... [33] [83]
                               ZONE TO TRIP PREFIX..... [34] [84]

```

Figure 25: CAD Cross Reference (9.2.1) screen

The CAD Cross Reference program allows you to use a specific AM 2000 code in the AMR system when a specific code is found in a selected CAD file field.

## CAD Cross Reference (MBCADXM) program

```

=====ttywb====TMB===== CAD CROSS REFERENCE =====MBCADXM=
ADDING NEW RECORD
                                ACCEPT (Y/N) : Y
=====
                                DIVISION FILE =====
                                LOB CODE      : BHAM   BIRMINGHAM'S TEST LOB
                                CAD CODE      : SOUTH MISS
                                AM 2000 CODE: 1000   DIVISION 1000

[F1]=End, [F2]=Delete, [F4]=PrtScr, [F5]=Help, [F6]=Search, [F10]=Accept

```

Figure 26: CAD Cross Reference screen

**FIELD TO FIELD MAPPING** - Maps between identical fields on the CAD file and the AM 2000 system. For example if South Miss is found in the Division field on the CAD file, 1000 is used for the division code in the AM 2000 system. (option 3)

**LOB CODE** - This is the LOB code used when transferring the selected CAD file in which the cross referencing occurs. \*\*\*\* can be used to indicate cross referencing for all LOBs.

**CAD CODE** - This is the CAD file code that generates a cross reference. For example, South Miss.

**AM 2000 CODE**- This is a valid AM 2000 code used in the specified field. For example 1000.

This example displays a division cross reference that affects only CAD files processed using the Birmingham LOB.

## CAD Cross Reference (MBCADXM) Program

```

=====ttywb=====TMB===== CAD CROSS REFERENCE =====MBCADXM=
ADDING NEW RECORD

                                ACCEPT (Y/N) : Y
===== COUNTY & CALLER FILE =====

LOB CODE      : ****  ALL LINES OF BUSINESS

CAD COUNTY    : CNTY S

CAD CALLER    : EMER

AM 2000 CODE: 911  EMERGENCY 911 LOB

[F1]=End, [F2]=Delete, [F4]=PrtScr, [F5]=Help, [F6]=Search, [F10]=Accept

```

Figure 27: CAD Cross Reference screen

**SPECIAL MAPPING OPTIONS** - Allows you the ability to map to a specific AM 2000 field based on data in a different field on the CAD file. For example, if CNTY S is found in the county code field on the CAD file, EMER is used for the LOB code in the AM 2000 system. (option 25)

**LOB CODE** - This is the LOB code used when transferring the selected CAD file in which the cross referencing occurs. \*\*\*\* can be used to indicate cross referencing for all LOBs.

**CAD CODE** - This is the CAD file code that generates a cross reference. For example, CNTY S and EMER.

**AM 2000 CODE**- This is a valid AM 2000 code used in the specified field. For example 911.

This screen displays a county and caller cross reference that affects all CAD files.

## 5 Processing CAD Files

### Transfer CAD To AM 2000 (MBCADI2) Program

```
===== TRANSFER CAD TO AM 2000 =====MBCADI2=
                                     ACCEPT (Y/N) : Y
=====

This program will transfer CAD tickets to the AM 2000 system.

A list of the transferred CAD tickets and dispatch cards will
also be generated.

LINE OF BUSINESS:  BHAM  BIRMINGHAM'S TEST LOB

LOB CAD           :  TRI  TRITECH CAD FILES

[F1]=End, [F4]=PrtScr, [F5]=Help, [F6]=Search
```

Figure 28: Transfer CAD To AM 2000 (9.2.2) screen

## Transfer CAD To AM 2000 (MBCADI2) program

```
===== TRANSFER CAD TO AM 2000 =====MBCADI2=

          ACCEPT (Y/N) : Y

=====

          This program will transfer CAD tickets to the AM 2000 system.

          A list of the transferred CAD tickets and dispatch cards will
          also be generated.

+-----+
| FILE NAME                                     |
| FEB062000.TRI                               |
| FEB072000.TRI                               |
|> FEB082000.TRI                             |
| FEB092000.TRI                               |
|                                     *** END OF FILE *** |
|                                     |
| CAD IFACE [F1]END,[F7]1st,[F8]NXT.         |
+-----+

[F1]=End, [F4]=PrtScr, [F5]=Help, [F6]=Search
```

Figure 29: Transfer CAD To AM 2000 (File Name) screen



## Transfer CAD To AM 2000 (MBCADI2) Program

```
===== TRANSFER CAD TO AM 2000 =====MBCADI2=
                                     ARE YOU SURE (Y/N): Y
=====

This program will transfer CAD tickets to the AM 2000 system.

A list of the transferred CAD tickets and dispatch cards will
also be generated.

LINE OF BUSINESS:  BHAM  BIRMINGHAM'S TEST LOB

LOB CAD           :  TRI  TRITECH CAD FILES

FILE SELECTED    :  FEB082000.TRI

[F1]=End, [F4]=PrtScr, [F5]=Help, [F6]=Search
```

Figure 30: Transfer CAD To AM 2000 screen

## Transfer CAD To AM 2000 (MBCADI2) Program

```
===== TRANSFER CAD TO AM 2000 =====MBCADI2=
                                     ARE YOU SURE (Y/N): Y
=====

This program will transfer CAD tickets to the AM 2000 system.

A list of-----+ will
also be g|
          | TRANSFERRING CAD TICKETS. PLEASE WAIT... |
          |
LINE OF B|          RECS READ   :    12 |
          |          TRANSFERRED :     7 |
LOB CAD  |          CANCELLED  :     4 |
          |          DUPLICATES  :     1 |
FILE SELE|          REJECTS    :     0 |
          |
          | ** COMPLETED **          PRESS <RTN> TO EXIT_ |
          +-----+

[F1]=End, [F4]=PrtScr, [F5]=Help, [F6]=Search
```

Figure 31: Transfer CAD To AM 2000 screen

## CAD Transfer Error Log report

DATE	02/09/2000 10:07	TEAM B's TRAINING F/E	MBCADT	PAGE	1
*** C A D T R A N S F E R E R R O R L O G ***					
TRIP#	PATIENT NAME	CADX CODE	REASON		
=====					
00004879-00	MAZZONI, NICHOLAS	GCB	Code GCB	not found in LC file	
00004879-00	MAZZONI, NICHOLAS	BRMC	Code BRMC	not found in LC file	
00004880-00	JOHNSON, IDELLA	SRD	Code SRD	not found in LC file	
00004880-00	JOHNSON, IDELLA	CD	Code CD	not found in LC file	
00004881-00	SIMPSON, ROBERT	HMC	Code HMC	not found in CL file	
00004881-00	SIMPSON, ROBERT	OH	Code OH	not found in LC file	
00004886-00	SAGERS, HUBERT	GCB	Code GCB	not found in LC file	
00004886-00	SAGERS, HUBERT	BRMC	Code BRMC	not found in LC file	
00004890-00	SHOEMAKER, JAMES	OSH	Code OSH	not found in LC file	
00004891-01	HILTON, FRANK	J3C	Code J3C	not found in RC file	
00004892-00	PRIMEAUX, ANDREW 3805	ADMINISTRA	Code ADMINISTRA	not found in DV file	
00004892-00	PRIMEAUX, ANDREW 3805	BVA	Code BVA	not found in CL file	
00004892-00	PRIMEAUX, ANDREW 3805	RE	Code RE	not found in RC file	
00004892-00	PRIMEAUX, ANDREW 3805	KMC	Code KMC	not found in LC file	
00004892-00	PRIMEAUX, ANDREW 3805	BVA	Code BVA	not found in LC file	
00004896-00	HANDY, EDWARD	J3C	Code J3C	not found in RC file	
00004897-00	FRITZ, RITA		DUPLICATE TRIP ENCOUNTERED IN AMCAD FILE		
00004924-00	NEVES, SCOTT	J3C	Code J3C	not found in RC file	
00500434-00	REED, CORNELLA	MEDI-VAN	Code MEDI-VAN	not found in DV file	

00500434-00	REED, CORNELLA	PNH	Code PNH	not found in CL file
00500434-00	REED, CORNELLA	SRD	Code SRD	not found in LC file
00500434-00	REED, CORNELLA	PNH	Code PNH	not found in LC file
00500436-00	PICKEL, JOHNNIE	MEDI-VAN	Code MEDI-VAN	not found in DV file
00500436-00	PICKEL, JOHNNIE	SRH	Code SRH	not found in CL file
00500436-00	PICKEL, JOHNNIE	SRH	Code SRH	not found in LC file
TOTAL NUMBER OF ERRORS =				25

Figure 32: CAD Transfer Error Log Report



A description of the two digit file code is described in section seven, CAD Trouble Shooting.

## CAD Transfer Report (MBCADI3) Program

```
====/ttyva====BG1===== CAD TRANSFER REPORT =====MBCADI3=  
[ENTER] = ALL  
  
=====
```

REPORT TYPE	:	_	(L=List,D=Dispatch Cards,B=Both)
LINE OF BUSINESS	:		(Y'ES, A'LL)
INCLUDE CROSS REFERENCED LOBS:			(Y/N)
STARTING DATE OF SERVICE	:		
ENDING DATE OF SERVICE	:		
STARTING TRIP PREFIX	:		
ENDING TRIP PREFIX	:		
INCLUDE CANCELED TRIPS	:		(Y/N)

```
[F1]=End, [F4]=PrtScr, [F6]=Search
```

Figure 33: CAD Transfer Report screen

## CAD Transfer Report (MBCADI3) Program

```
====/ttyva====BGl===== CAD TRANSFER REPORT =====MBCADI3=  
[ENTER] = ALL  
                OK TO BEGIN (Y/N): Y  
=====
```

REPORT TYPE	:	L (L=List,D=Dispatch Cards,B=Both)
LINE OF BUSINESS	:	A (Y'ES, A'LL)
STARTING DATE OF SERVICE	:	02/08/2000
ENDING DATE OF SERVICE	:	02/08/2000
STARTING TRIP PREFIX	:	
ENDING TRIP PREFIX	:	ZZZ
INCLUDE CANCELED TRIPS	:	Y (Y/N)

[F1]=End, [F4]=PrtScr, [F6]=Search

Figure 34: CAD Transfer Report screen

### Transferred CAD Tickets List report

LOB	TRIP NUMBER	D.O.S.	DSPATCH	PATIENT NAME	FROM LOCATION	TO LOCATION	UNIT CALLR
=====							
BHAM	TRI-00004879-00	02/08/00	02:59pm	MAZZONI, NICHOLAS	265 BEACH BLVD	150 REYNOIR ST , BILOXI	51
BHAM	TRI-00004880-00	02/08/00	04:00pm	JOHNSON, IDELLA	4907 TELEPHONE RD	3401 MAIN ST, MOSS POINT	49
BHAM	TRI-00004881-00	02/08/00	04:00pm	SIMPSON, ROBERT	NORTH BY NORTHWEST	1516 JEFFERSON , NEW ORLEA	44 HMC
BHAM	TRI-00004886-00	02/08/00	03:51pm	SAGERS, HUBERT	265 BEACH BLVD	150 REYNOIR ST , BILOXI	40
BHAM	TRI-00004890-00	02/08/00	04:15pm	SHOEMAKER, JAMES	5917 OLD FORT BAYOU RD	3109 BIENVILLE , OCEAN SPR	32
BHAM	TRI-00500434-00	02/08/00	04:45pm	REED, CORNELLA	4907 TELEPHONE RD	4403 HOSPITAL S, PASCAGOUL	50 PNH
BHAM	TRI-00500436-00	02/08/00	05:00pm	PICKEL, JOHNNIE	2809 DENNY AVE ER	10513 FORREST H, JACKSON-C	49 SRH
=====							
TOTAL NUMBER OF CAD RECORDS =				7			

Figure 35: Transferred CAD Tickets List Report screen

```
DATE 02/09/2000 10:11                                TEAM B's TRAINING F/E                                MBCADI    PAGE    1
***  T R A N S F E R R E D  C A D  T I C K E T S  L I S T  ***
LOB: ALL      XREF LOB: NO                                FROM D.O.S.: 02/08/2000
INCLUDE CANCELED TRIPS: YES                            FROM D.O.S.: 02/08/2000
FROM TRIP PREFIX:      TO: ZZZ

LOB  TRIP NUMBER      D.O.S.  DSPATCH  PATIENT NAME                FROM LOCATION                TO LOCATION                UNIT CALLR
=====
BHAM TRI-00004891-01 02/08/00 04:14pm HILTON, FRANK                I-10                        ,                            48
BHAM TRI-00004892-00 02/08/00 05:15pm PRIMEAUX, ANDREW 3805                301 FISHER STREET, KAFB ME 400 VETERANS AV, BILOXI                48    BVA
BHAM TRI-00004896-00 02/08/00 05:03pm HANDY, EDWARD                324 HUNTER AVE                ,                            30
BHAM TRI-00004924-00 02/08/00 10:37pm NEVES, SCOTT                697 MICHELLE DR                ,                            45

TOTAL NUMBER OF CANCELED RECORDS =      4
TOTAL NUMBER OF RECORDS =                11
```

Figure 36: Transferred CAD Tickets List Report screen



## 6 Review CAD Trips

### Outstanding Trips (MBOUTB) Program

```
==pty/ttywb===TMB===== OUTSTANDING TRIPS =====MBOUTB==  
  
                SELECT OPTION: ____  
=====
```

1. PROCESS OUTSTANDING TRIPS
2. OUTSTANDING TRIP REPORT
3. DRY RUN MAINTENANCE

```
[F1]=End, [F4]=PrtScr, [F5]=Help
```

Figure 37: Outstanding Trips screen. (1.31)

## Process Outstanding Trips (MBOU1) Program

```

==pty/ttywb====TMB===== PROCESS OUTSTANDING TRIPS =====MBOU1=
[ENTER] = ALL
                                ACCEPT: Y
=====
SELECT BY                       : 1 (1 = DATE OF SERVICE, 2 = TRIP)
  STARTING DATE OF SERVICE      : ***** ALL DATES
  ENDING DATE OF SERVICE        :
SEARCH BY                       : N/A
ADDITIONAL SEARCH OPTIONS      :
  STARTING TRIP NUMBER          : ***** ALL TRIPS
  ENDING TRIP NUMBER            :
  DIVISION                     : ***** ALL DIVS
  LOB                           : ***** ALL LOBS
  PATIENT NAME                  : ***** ALL PATIENTS
  UNIT                          : ***** ALL UNITS
  CALLER                        : ***** ALL CALLERS
  STATUS                        : ***** ALL STATUS CODES
  FROM LOCATION CODE            : ***** ALL FROM LOC CODES
  FROM LOCATION DESC            : ***** ALL FROM LOC DESCS
  TO LOCATION CODE              : ***** ALL TO LOC CODES
  TO LOCATION DESC              : ***** ALL TO LOC DESCS
  STARTING TIME CALL RECEIVED: ***** ALL TIMES
  ENDING TIME CALL RECEIVED:
[F1]=End, [F4]=PrtScr, [F5]=Help, [F6]=Search, [F10]=Accept

```

Figure 38: Process Outstanding Trips (1.31.1) screen

When the CAD file is transferred the trips are accessed or viewed from the Outstanding Trip (1.31.1) screen. You may define your search based on the options listed on the screen.

## Process Outstanding Trips (MBOUTB1) Program

```

==pty/ttywb====TMB===== PROCESS OUTSTANDING TRIPS =====MBOUTB1=
Enter in SEL D'isplay, C'ancel, M'issing A'ctivate, R'eopen, Returned to 'F'ield

=====
SEL   D.O.S.   TRIP NUMBER   PATIENT NAME           DISPATCH  UNIT STA RSN
[ ] 02/04/2000 TRI-00004897-00 RITA                    14:00    0001  A
[ ] 02/08/2000 TRI-00004879-00 MAZZONI, NICHOLAS      14:59    51   O
[ ] 02/08/2000 TRI-00004880-00 JOHNSON, IDELLA        16:00    49   O
[ ] 02/08/2000 TRI-00004881-00 SIMPSON, ROBERT        16:00    44   O
[ ] 02/08/2000 TRI-00004886-00 SAGERS, HUBERT         15:51    40   O
[ ] 02/08/2000 TRI-00004890-00 SHOEMAKER, JAMES       16:15    32   O
[ ] 02/08/2000 TRI-00004891-01 HILTON, FRANK           16:14    48   C J3C
[ ] 02/08/2000 TRI-00004892-00 PRIMEAUX, ANDREW 3805  17:15    48   C RE
[ ] 02/08/2000 TRI-00004896-00 HANDY, EDWARD           17:03    30   C J3C
[ ] 02/08/2000 TRI-00004924-00 NEVES, SCOTT            22:37    45   C J3C
[ ] 02/08/2000 TRI-00500434-00 REED, CORNELLA         16:45    50   O
[ ] 02/08/2000 TRI-00500436-00 PICKEL, JOHNNIE        17:00    49   O
[ ] 02/14/2000 TRI-00021499-00 PAM HORNSBY             14:00    0001  A

[F1]=End,[F2]=ChgDisp,[F3]=StatusChg,[F4]=PrtScr,[F7]=Prev,[F8]=Next,[F10]=Acpt

```

Figure 39: Process Outstanding Trips Report screen

This screen displays trips after you accept the Process Outstanding Trips screen search options.

To view CAD trip data, you must select the D'isplay *D* option. If you wish to edit CAD trip data, you will access the CAD trip on the CAD Information (1.1.1) screen. Refer to section two, "Manual CAD Setup".

## Outstanding Trip Report (MBOUTB2) Program

```
==pty/ttywb====TMB===== OUTSTANDING TRIP REPORT =====MBOUTB2=  
[ENTER]=ALL  
  
=====
```

REPORT OPTION	:	3 (1=Detail, 2=Summary, 3=Condensed)
TRIP PREFIX	:	
FROM DATE OF SERVICE	:	
TO DATE OF SERVICE	:	
STATUS CODE	:	('O'pen,'A'ctive,'C'ancel,'M'issing,'F'ield)
FROM STATUS CHANGE DATE:		
TO STATUS CHANGE DATE:		
LINE OF BUSINESS	:	
UNIT NUMBER	:	
SORT ORDER	:	

```
[F1]=End, [F4]=PrtScr, [F5]=Help, [F6]=Search
```

Figure 40: Outstanding Trip Report screen. (1.31.2)

This screen defines which trips will appear on the Outstanding Trips report.

### Outstanding Trip Report

TRIP NUMBER	D.O.S.	UNIT	LOB	PATIENT NAME	ROUND TRIP#	CALLER	STATUS	CHG DATE	REASON CODE
TRI-00004879-00	02/08/2000	51	BHAM	MAZZONI, NICHOLAS			OPEN	00/00/0000	
TRI-00004880-00	02/08/2000	49	BHAM	JOHNSON, IDELLA			OPEN	00/00/0000	
TRI-00004881-00	02/08/2000	44	BHAM	SIMPSON, ROBERT		HMC	OPEN	00/00/0000	
TRI-00004886-00	02/08/2000	40	BHAM	SAGERS, HUBERT			OPEN	00/00/0000	
TRI-00004890-00	02/08/2000	32	BHAM	SHOEMAKER, JAMES			OPEN	00/00/0000	
TRI-00004891-01	02/08/2000	48	BHAM	HILTON, FRANK			CANCELED	00/00/0000	
TRI-00004892-00	02/08/2000	48	BHAM	PRIMEAUX, ANDREW	3805	BVA	CANCELED	00/00/0000	
TRI-00004896-00	02/08/2000	30	BHAM	HANDY, EDWARD			CANCELED	00/00/0000	
TRI-00004897-00	02/04/2000	0001		RITA		PAT	ACTIVE	00/00/0000	
TRI-00004924-00	02/08/2000	45	BHAM	NEVES, SCOTT			CANCELED	00/00/0000	
TRI-00021499-00	02/14/2000	0001	100	PAM HORNSBY		MONT	ACTIVE	00/00/0000	
TRI-00500434-00	02/08/2000	50	BHAM	REED, CORNELLA		PNH	OPEN	00/00/0000	
TRI-00500436-00	02/08/2000	49	BHAM	PICKEL, JOHNNIE		SRH	OPEN	00/00/0000	

TOTAL NUMBER OF RECORDS PRINTED IN THIS REPORT = 13

Figure 41: Outstanding Trip report

## Dry Run Maintenance (MBOU3) Program

```

==pty/ttywb====TMB===== DRY RUN MAINTENANCE =====MBOU3=

=====
TRIP#: ____          PAT NAME :
D.O.S:              BIRTHDATE:
SSN# :              MEDICARE#:
=====
UNIT      :          ----- T I M E -----
CALLER   :          CALL RECVD:
CLLR NAME:          DISPATCHED:
CANCEL   :          RESPONDED :
          :          ARR V SCENE:
FR LOC   :          LEFT SCENE:
  DESC1:          ARR V DEST :
  DESC2:          COMPLETED :
  DESC3:          AVAILABLE  :
  CITY :   STATE:   ZIP:     COUNTY:  CANCELED :

TO LOC   :
  DESC1:
  CITY :   STATE:   ZIP:

[F1]=End,[F2]=Delete,[F4]=PrtScr,[F5]=Help,[F6]=Search,[F10]=Accept

```

Figure 42: Dry Run Maintenance screen. (1.31.3)

This screen has the same functions as the Outstanding Trips screen, but it only shows cancelled trips. You can select *F6* and search for cancelled trips.

## Dry Run Maintenance Report

```

==pty/ttywb===TMB===== DRY RUN MAINTENANCE =====MBOU3B3=
-----
                        Dry Run Trips

DATE OF SERVICE: 00/00/0000      UNIT:          CALLER:
-----
      D.O.S      TRIP NUMBER      PATIENT NAME              UNIT  CALLER
-----
[ ] 02/08/2000 TRI-00004891-01 HILTON, FRANK              48
[ ] 02/08/2000 TRI-00004892-00 PRIMEAUX, ANDREW 3805          48   BVA
[ ] 02/08/2000 TRI-00004896-00 HANDY, EDWARD              30
[ ] 02/08/2000 TRI-00004924-00 NEVES, SCOTT              45

      ** Enter 'X' to select, 'D' to display trip detail information **

[F1]=End, [F4]=PrtScr, [F5]=Help, [F6]=Search, [F7]=First, [F8]=Next

```

Figure 43: Dry Run Maintenance screen

## Trip Entry (MBTRPM) Program

```
==ttyp3=====TMB===== TRIPS =====MBTRPM==  
  
=====
```

1. CAD INFORMATION

2. TRIP ENTRY

SELECT OPTION: \_

[F1]=End, [F4]=PrtScr, [F5]=Help

Figure 44: Trip Entry screen

By going through Trip Entry, the user can accept a CAD trip into the AM2000 system.



## Trip Entry (MBTRP41) Program

```

=tttyttyp3=====TMB===== TRIP ENTRY =====MBTRP41=====
TRIP ENTERED SUCCESSFULLY          PRESS [ENTER] TO CONTINUE._
SELECT OPTION: Y (C=CHANGE LINE,A=ADD LINE,S=SUMMARY,Y=ACCEPT)  LINE#:
===== ADD MODE =====
ACCOUNT#: 000000056  PAM HORNSBY          STATUS: AA ACTIVE ACCO
PATIENT#: 0000      PAM HORNSBY          BATCH : 1000/100 /1
-----
TRIP NUMBER      D.O.S      STATUS  EMER DIV  LOB  TOB  #PAT R/T BILL-TO CONT
TRI-00021499-00  02/14/2000  OPEN    N    1000 100  ALS   01  N   0000
-----
LINE  PROC  DESCRIPTION              MOD1 MOD2  TOS  UNIT CHG  QTY  TOTAL CHG
-----
0001  6040  EMERGENCY                G      9    50.00    1    50.00
0002  1100  ALS BASE                 G      9    450.00    1    450.00
0003  2100  ALS MILEAGE              G      9     6.00    15    90.00
0004  3001  OXYGEN                   G      9    30.00    1    30.00
0005  3050  PERSONAL CARE SUPPLI    G      9    10.00    1    10.00
0006  3051  INFECTION PRECAUTION    G      9     8.00    1     8.00
-----
TOTAL CHARGES :      638.00          EXPECTED DISALLOW:      .00
TOTAL PAYMENTS:      .00          AMOUNT DUE      :      638.00

[F1]=End,[F2]=BillInfo,[F3]=CADInfo,[F4]=Prt,[F5]=Help,[F7]=First,[F8]=Next

```

Figure 45: Trip Entry screen



**Note**

A trip entry is only considered a part of the AM 2000 system after you have successfully entered it in the Trip Entry program

## 7 CAD Trouble Shooting

### Top CAD Issues For Help Desk

#### 1 Please delete CAD file.

When this is requested by the site you will need to get the following information:

1. Have they tried to transfer the file to AM 2000 in 9.2.2 ( Transfer CAD to AM 2000)?
2. What CAD file do they want deleted?
3. What is the Date of Service range?
4. What is the prefix of the trips?

If they have not transferred the file to AM 2000 then you can simply move the CAD file to **/tmp/tmpCAD**. In this example FEB042000.TRI is a CAD file.

```
/u/acudir/dataCAD> ls -l FEB042000.TRI
-rw-rw-rw- 1 ftp      guest      39429 FEB 10 05:02  FEB042000.TRI
/u/acudir/dataCAD> mv 12900.HOU /tmp/tmpCAD/FEB042000.TRI
```



**Note**

Do not perform this task without calling the AMR Helpdesk. 1-800-943-5799

---

If they have transferred the CAD file to AM 2000 in 9.2.2, you will run the FIXCAD2 program.

1. Go to 5.9 Utility Programs
2. Enter Password
3. Access Code "FIXCAD2"
4. Enter the F/E code for the site
5. Enter the date of service range
6. Enter the prefix of the trip numbers
7. You will get a listing of the trips that were removed from the system. Put the listing in the view.

## Utilities (MBUTL2) Program

```

=pty/ttyj1====TMB=====          Pam's Test F/E          =====MBUTL===+
  *DIRECT ACCESS*
  [F1]=END                ENTER OPTION NUMBER:                [F5]=HELP
+===== UTILITIES =====+

1. ACCOUNT PURGE                16. ACCESS ARCHIVED AUDIT HISTORY
2. DRY RUN PURGE                17. SET FREQUENTLY USED DIAGNOSIS CODES
3. VALIDATE AM 2000 DATABASE    18. CONTRACT HEADER PURGE
4. INS FORM GENERATOR+-----+ UTILITY
5. PATIENT HISTORY T|          | NT SIGNATURE ON FILE
6. MERGE ACCOUNTS UT| PASSWORD:  ___ | PLAN REASSIGN MENU
7. BUILD WORD PROCES|          | DE UTILITY
8. UPDATE CHARGE SCH+-----+ T (WEST DUMP)
9. SPECIAL UTILITY PR
10. FILE MAINTENANCE UTILITY
11. INSURANCE MERGE
12. SET PRINTER FONT CODES
13. ARCHIVE ACCOUNT HISTORY
14. ACCESS ARCHIVED ACCOUNT HISTORY
15. ARCHIVE AUDIT HISTORY

```

Figure 46: Utilities (5.9) screen

If a CAD file has been loaded into the AM 2000 system, you can remove it by running the Data Fix program. When you enter your password on the Utilities (5.9) screen, the system invokes the Fix CAD (FIXCAD2) program.

## Fix CAD (FIXCAD2) Program

```
=====FIXCAD2=  
[ENTER] = ALL  
  
=====
```

F/E: \_\_\_\_

DATE RANGE  
DATE FROM:                   DATE TO:

TRIP PREFIX:

[F1]=End, [F4]=PrtScr

Figure 47: Fix CAD screen

This is the FIXCAD2 screen. You must specify an FE. The date range and Trip Prefix fields are optional.

## Process Outstanding Trips (MBOU1) Program

```

==pty/ttywb====TMB===== PROCESS OUTSTANDING TRIPS =====MBOU1=
Enter in SEL D'isplay, C'ancel, M'issing A'ctivate, R'eopen, Returned to 'F'ield

=====
SEL  D.O.S.  TRIP NUMBER  PATIENT NAME  DISPATCH  UNIT STA RSN
[ ] 02/04/2000 TRI-00004897-00 RITA 14:00 0001 A
[ ] 02/08/2000 TRI-00004879-00 MAZZONI, NICHOLAS 14:59 51 O
[ ] 02/08/2000 TRI-00004880-00 JOHNSON, IDELLA 16:00 49 O
[ ] 02/08/2000 TRI-00004881-00 SIMPSON, ROBERT 16:00 44 O
[ ] 02/08/2000 TRI-00004886-00 SAGERS, HUBERT 15:51 40 O
[ ] 02/08/2000 TRI-00004890-00 SHOEMAKER, JAMES 16:15 32 O
[ ] 02/08/2000 TRI-00004891-01 HILTON, FRANK 16:14 48 C J3C
[ ] 02/08/2000 TRI-00004892-00 PRIMEAUX, ANDREW 3805 17:15 48 C RE
[ ] 02/08/2000 TRI-00004896-00 HANDY, EDWARD 17:03 30 C J3C
[ ] 02/08/2000 TRI-00004924-00 NEVES, SCOTT 22:37 45 C J3C
[ ] 02/08/2000 TRI-00500434-00 REED, CORNELLA 16:45 50 O
[ ] 02/08/2000 TRI-00500436-00 PICKEL, JOHNNIE

[F1]=End,[F2]=ChgDisp,[F3]=StatusChg,[F4]=PrtScr,[F7]=Prev,[F8]=Next,[F10]=Acpt

```

We will remove this trip in  
FIXCAD2.

Figure 48: Process Outstanding Trips screen

## Process Outstanding Trips (FIXCAD2) Program - Date Range

```
=====FIXCAD2=
[ENTER] = ALL
                OK TO BEGIN (Y/N): Y
=====
F/E: TMB

DATE RANGE
DATE FROM: 02/01/2000   DATE TO: 02/06/2000

TRIP PREFIX: TRI

[F1]=End, [F4]=PrtScr
```

Figure 49: Process Outstanding Trips (Date Range Selection) screen

After you select outstanding trips for processing, this screen displays and prompts you to enter a date range for processing the trips.

### CAD Error Listing report

```
DATE 02/09/2000 10:20                TEAM B's TRAINING F/E                FIXCAD    PAGE    1
*** C A D  E R R O R  L I S T I N G ***
=====
DELETED AMCAD-REC, KEY=TRI0000489700
```

Figure 50: CAD Error Listing Report

## Process Outstanding Trips Report screen

```

==pty/ttywb====TMB===== PROCESS OUTSTANDING TRIPS =====MBOU1=
Enter in SEL D'isplay, C'ancel, M'issing A'ctivate, R'eopen, Returned to 'F'ield

=====
SEL   D.O.S.   TRIP NUMBER   PATIENT NAME           DISPATCH  UNIT  STA  RSN
[ ] 02/08/2000 TRI-00004879-00 MAZZONI, NICHOLAS      14:59   51   O
[ ] 02/08/2000 TRI-00004880-00 JOHNSON, IDELLA        16:00   49   O
[ ] 02/08/2000 TRI-00004881-00 SIMPSON, ROBERT        16:00   44   O
[ ] 02/08/2000 TRI-00004886-00 SAGERS, HUBERT         15:51   40   O
[ ] 02/08/2000 TRI-00004890-00 SHOEMAKER, JAMES      16:15   32   O
[ ] 02/08/2000 TRI-00004891-01 HILTON, FRANK          16:14   48   C  J3C
[ ] 02/08/2000 TRI-00004892-00 PRIMEAUX, ANDREW 3805  17:15   48   C  RE
[ ] 02/08/2000 TRI-00004896-00 HANDY, EDWARD          17:03   30   C  J3C
[ ] 02/08/2000 TRI-00004924-00 NEVES, SCOTT           22:37   45   C  J3C
[ ] 02/08/2000 TRI-00500434-00 REED, CORNELLA        16:45   50   O
[ ] 02/08/2000 TRI-00500436-00 PICKEL, JOHNNIE       17:00   49   O

[F1]=End,[F2]=ChgDisp,[F3]=StatusChg,[F4]=PrtScr,[F7]=Prev,[F8]=Next,[F10]=Acpt

```

Figure 51: Process Outstanding Trips Report screen

When you return to the Process Outstanding Trips (1.31.1) screen, the displayed trips do not include the removed trip.



**2 If you manually enter a CAD trip from the hard copy and a CAD file with this trip is transferred through this system, what effect would this have on the manually entered trips?**

If there are duplicates, the system removes them and generates an error listing report of the duplicate files from the CAD file.

**3 In CAD Cross Reference screen 9.2.1, there is an option to use wild cards \*\*\*\* in the LOB Code field. If the \*\*\*\* wild card option is used and I enter an actual LOB Code (ie. DNVR), which would have precedence over the other?.**

The actual LOB (ie. DNVR) will take precedence over the \*\*\*\* wild card option

**4 How can you change a Personnel/Employee code on a trip once it is transferred into AM 2000?**

The information can only be modified through Outstanding Trips. (1.31.1) Once the trip has been accepted in Trip Entry, this information cannot be changed.

**5 When transferring a CAD file, the site may receive an error. An example of an error is CODE 5020 NOT FOUND IN THE LC FILE. How can I correct this error?**

The two digit code refers to the File Maintenance field that does not contain the code listed on this trip. In the above example the code 5020 appeared on the trip but is not setup as a valid LC code on the Location File Maintenance screen.

The CAD trip did load into Outstanding Trips with the invalid code; however, the code will need to be set up in the appropriate File Maintenance field before the trip can be accepted in Trip Entry.



**Note**

For more information on the CAD Transfer Error Log, refer to section five, Processing CAD Files

---

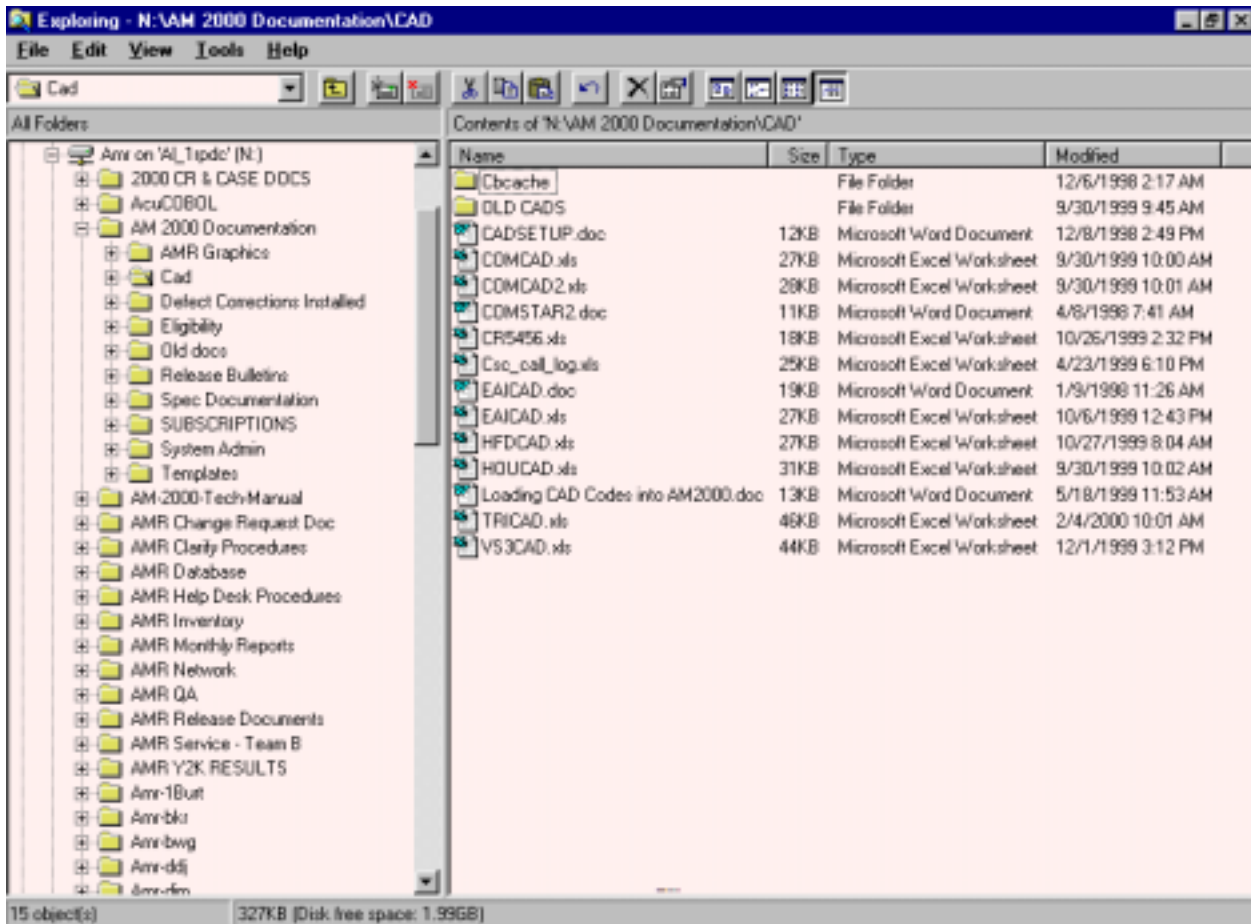
### CAD file codes that appear on the CAD Transfer Error Log.

<u>CAD CODE</u>	<u>CADX TYPE</u>	<u>CAD CROSS REFERENCE FILE</u>
'CC'	CALL-CODE	CALLER-REASON CODE
'CY'	CITY	CITY
'CL'	CLLR	CALLER
'CP'	COMPANY	COMPANY
'CT'	CNTY	COUNTY
'CU'	CNTY-UNIT	COUNTY TO UNIT
'RC'	CODE	REASON CODES
'DI'	DIA	DIAGNOSIS
'DT'	DIST	DISTRICT
'DP'	DIST-PREFIX	DISTRICT TO TRIP PREFIX
'DV'	DIV	DIVISION
'DL'	DIV-LOB	DIVISION TO LOB
'LB'	LOB	LOB
'LC'	LOC	LOCATION
'PE'	PER	PERSONNEL
'TB'	TOB	TYPE OF BUSINESS
'UN'	UNIT	UNIT/VEHICLE
'UD'	UNIT-DIV	UNIT TO DIVISION
'UL'	UNIT-LOB	UNIT TO LINE OF BUSINESS
'UP'	UNIT-PREFIX	UNIT TO TRIP PREFIX
'ZO'	ZONE	ZONE
'ZD'	ZONE-DIV	ZONE TO DIVISION
'ZP'	ZONE-PREFIX	ZONE TO TRIP PREFIX
'ZL'	ZONE-LOB	ZONE TO LINE OF BUSINESS

## 6 The site states that the CAD program is transferring data from the CAD File incorrectly.

All CAD File Layouts are maintained in CAD documentation on the N:\ drive. These layouts are used to verify that the information in the CAD file is correct. The most common error of this type is caused when a change is made by the client that does not conform to the layout.

### Location of The CAD Files On The Network



All documents relating to the CAD file layout in question should be opened and reviewed. For example, EAI CAD has a layout in an Excel format and a separate Word document. These documents are maintained by the programmer when changes are made to any of the CAD programs.

**Sample CAD File Layout. (TRITECH CAD)**

<u>FLD#</u>	<u>NAME</u>	<u>SIZE</u>	<u>FORMAT</u>	<u>MAPPED FIELD</u>	<u>AM 2000 FIELD</u>	<u>COMMENT</u>
1	TRIPN	10	99999999-99		CAD-TRIP	
2	SCH-DATE	8	CCYYMMDD		CAD-TRIP-DATE	
3	SSN	11	XX-XX-XXXX		CAD-SSN	
4	PAT-NAME	30	LAST, FIRST		CAD-PAT-NAME	
5	DOB	8	CCYYMMDD		CAD-BIRTHDATE	
6	MEDICARE	12			CAD-MEDICARE	
7	RP-INFO	1				UNUSED
8	NOTE-FLAG	1				UNUSED
9	RETURN-1	7			CAD-RTRIPN	
10	UNIT	3		YES	CAD-UNIT	
11	RP-CODE	4		YES	CAD-CALLER	
12	CALL-BACK	10			CAD-CALL-BACK	
13	CAN-CODE	3		YES	CAD-CANCEL	
14	REF-ID	10			CAD-REF-ID	
15	NUM-PATS	2			CAD-NUM-PATS	
16	NATURE	4			CAD-PAT-COND	
17	PRIORITY	3			CAD-RESP- PRIORITY	
18	RES-CODE	3			CAD-TRAN- PRIORITY	
19	INC-PREM	6		YES	CAD-FR-LOC	

<u>FLD#</u>	<u>NAME</u>	<u>SIZE</u>	<u>FORMAT</u>	<u>MAPPED FIELD</u>	<u>AM 2000 FIELD</u>	<u>COMMENT</u>
20	INC-ADD	37			CAD-FR-DESC1	
21	ADD-LOC	30			CAD-FR-DESC2	
22	FR-CITY	30			CAD-FR-DESC3	COMBINED WITH FIELD 66
23	DES-PREM	6		YES	CAD-TO-LOC	
24	CITY	15			CAD-TO-DESC1	COMBINED WITH FIELD 25
25	DES-ADD	15			CAD-TO-DESC1	COMBINED WITH FIELD 24
26	REC-TIME	8	HH:MM:SS		CAD-CALL-RCVD	
27	NOT-TIME	8	HH:MM:SS		CAD- DISPATCHED	
28	EN-TIME	8	HH:MM:SS		CAD- RESPONDED	
29	SC-TIME	8	HH:MM:SS		CAD-ARRV- SCENE	
30	TR-TIME	8	HH:MM:SS		CAD-LEFT-SCENE	
31	DES-TIME	8	HH:MM:SS		CAD-ARRV-DEST	
32	AV-TIME	8	HH:MM:SS		CAD-COMPLETED	
33	CL-TIME	8	HH:MM:SS		CAD-AVAILABLE	
34	DISP-ID	10		YES	CADE- DISPATCHER	
35	CREW-1	10		YES	CADE- ATTENDANT	
36	CREW-2	10		YES	CADE-DRIVER	
37	DIAG-1	10		YES	CADE-DIA1	

<u>FLD#</u>	<u>NAME</u>	<u>SIZE</u>	<u>FORMAT</u>	<u>MAPPED FIELD</u>	<u>AM 2000 FIELD</u>	<u>COMMENT</u>
38	ZONE	10		YES	CADE-ZONE	
39	AREA	5			CADE-AREA	
40	GRID	5			CADE-GRID	
41	MAP-PAGE	5			CADE-MAP-PAGE	
42	TIME-CAN	8	HH:MM:SS		CADE-TIME- CANCEL	
43	MD-NAME	20			CADE-PHY-NAME	
44	AUTH-NO	30			CADE-AUTH-NO	
45	CASE-NUM	11			CADE-CASE-NO	
46	START-MILE	10	999999999.9		CADE-START- MILE	
47	END-MILE	10	999999999.9		CADE-END-MILE	
48	TOT-MILE	4	999.9		CADE-TOT-MILE	
49	GUARDIAN	30			CADE-RP-NAME	
50	GUAR-ADD	30			CADE-RP-ADDR	
51	GUAR-CITY	20			CADE-RP-CITY	
52	GUAR-STATE	2			CADE-RP-STATE	
53	GUAR-ZIP	10			CADE-RP-ZIP	
54	GUAR- PHONE	12			CADE-RP-PHONE	
55	INSURANCE	30			CADE-INS-NAME	
56	POLICY-NUM	20			CADE-POL-NO	
57	RELATNSHIP	15			CADE-RELATION	
58	NOTE-1	71			CADE-NOTES	

<u>FLD#</u>	<u>NAME</u>	<u>SIZE</u>	<u>FORMAT</u>	<u>MAPPED FIELD</u>	<u>AM 2000 FIELD</u>	<u>COMMENT</u>
59	NOTE-2	71			CADE-NOTES	
60	NOTE-3	71			CADE-NOTES	
61	NOTE-4	71			CADE-NOTES	
62	CO-RESP	3				UNUSED
63	CO-TIME	8				UNUSED
64	DISTRICT	20				CAN BE USED TO MAP LOB
65	APT-NBR	10			CAD-FR-DESC1	COMBINED WITH FIELD 20
66	FR-COUNTY	14			CAD-FR-DESC3	COMBINED WITH FIELD 22
67	CALLER- NAME	20			CADE-NOTES	
68	LOC-TYPE	16				UNUSED
69	NOTE-5	70			CADE-NOTES	
70	DIVISION	10			CAD-DIVISION	

**SPECIAL LOB MAPPING OPTIONS:**

BLANK	DEFAULT TO ENTERED LOB
N	DO NOT POPULATE LOB FIELD
D	MAP FROM DISTRICT FIELD
U	MAP FROM UNIT FIELD
V	MAP FROM DIVISION FIELD
Z	MAP FROM ZONE FIELD
A	MAP FROM CALLER FIELD
C	MAP FROM COUNTY AND CALLER FIELDS
I	MAP FROM CITY FIELD
O	MAP FROM COUNTY FIELD

**SPECIAL DIV MAPPING OPTIONS:**

D	DEFAULT TO FIELD #70
N	DO NOT POPULATE DIV FIELD
U	MAP FROM UNIT FIELD
Z	MAP FROM ZONE FIELD

**TRIP PREFIX MAPPING OPTIONS:**

BLANK	DEFAULT TO LOB CAD ID
D	MAP FROM DISTRICT FIELD
U	MAP FROM UNIT FIELD
Z	MAP FROM ZONE FIELD



## Test CAD File

```

0004879-00^20000208^^Mazzoni, Nicholas^^^^^51^^2284362933^^^1^^2^GCB^265 Beac
h Blvd^Grand Casino Biloxi - Gcb^Biloxi^BRMC^Biloxi^150 Reynoir St^14:58:56^14:5
9:23^14:59:59^15:02:05^15:24:39^15:30:59^15:47:04^16:07:23^2396^2137^2545^^^^^^
^^^101732^101734^2^^^^^^^OPERATOR 436-2946 MAP 237 E.10-57 East entrance10-5
4^^^^^Zone 11^^R^Mike^Casino^Falls/Back Injury (Traumatic)^SOUTH MISSISSIP^SOUT
H MISSISSIP

0004880-00^20000208^587-66-5228^Johnson, Idella^19270814^428305432W^^^^49^^76295
54^^^1^^4^4^SRD^4907 Telephone Rd^Singing River Dialysis - Srd^Pascagoula^CD^Mos
s Point^3401 Main St^15:02:16^16:00:00^15:09:16^15:15:37^15:27:12^15:30:05^15:43
:11^15:43:11^2029^2143^2157^^^^^^^124789^124789^^^^^^^medicare^^^MAP 245 H.(
Caution!): This is a Delta HomeMAP PAGE 245 H(Caution!): loc^ated southwest of o
ld dialysis on CriswellReturn trip of Call on 02/08/^2000 10:00:00 at Chateau De
ville - CdResponse Number 00004819^^^^Zone 94^^J^Joey^Clinic/Dr's Offi^Medicare
Transport^SOUTH MISSISSIP^SOUTH MISSISSIP

0004881-00^20000208^435-38-7682^Simpson, Robert^19290904^ya1435387682^^^^44^HMC^
2284678600^^^1^^5^5^HMC^149 Drinkwater Rd^Hancock Medical Cntr - Hmc^Bay St. Lou
is^OH^New Orleans^1516 Jefferson^15:13:31^16:00:00^15:14:40^15:14:42^16:08:34^17
:42:06^17:43:26^17:43:26^2396^2200^2190^^^^^^^Crowder/ McKardinal^^^223908^22397
2^64^^^^^^^blue cross^^^MED CONTROL 467-8669FAX # 467-8657(Caution!): Access Co
de to door is 8^669TAKE I-10 TO N.O., THEN 610 WEST, LIKE GOING TO N.O. INTERNA
TIONAL^AIRPORT, TO CAUSEWAY BLVD. EXITSOUTH ON CAUSEWAY, THEN LOOP EAST ON JE^F
PERSON HWY. HOSPITAL WILL BE ON THE RIGHT.TAKE I-10 TO N.O., THEN 610^^^Zone 12
^251^K^Brenda^Hospital^Medicare Transport^SOUTH MISSISSIP^SOUTH MISSISSIP

"FEB082000.TRI" 12 lines, 5813 characters

```

Figure 52: Sample CAD File

This is how the CAD file appears if you view it on the Vi Editor on the system box.

### CAD File Viewed In Excel Spreadsheet.

0004879-00	20000208		Mazzoni, Nicholas			51
0004880-00	20000208	587-66-5228	Johnson, Idella	19270814	428305432W	49
0004881-00	20000208	435-38-7682	Simpson, Robert	19290904	ya1435387682	44 HMC
0500434-00	20000208	428-44-9999	Reed, Cornella	19300717	428449999A	50 PNH
0004886-00	20000208		Sagers, Hubert			40
0500436-00	20000208		Pickel, Johnnie			49 SRH
0004890-00	20000208		Shoemaker, James			32
0004891-01	20000208		Hilton, Frank			48
0004892-00	20000208		Primeaux, Andrew	3805		48 BVA
0004896-00	20000208		Handy, Edward			30
0004897-00	20000208		Fritz, Rita			48
0004924-00	20000208		Neves, Scott			45

Figure 53: CAD File View - Excel

This is an example of how the CAD file appears when you import it into Microsoft Excel. This format makes it easier to verify data that matches the CAD file layout.

---

## 8 Additional CAD Notes